

Precision Rotation Stage | PR-50SM

www.micronixusa.com | info@micronixusa.com | phone: +1 (949) 480 0538 | fax: +1 (949) 480 0538

The PR-50 rotary stage excels where fast rotation speeds are needed. The stage utilizes a direct drive stepper motor combined with dual mutually pre-loaded ball bearings, which allow for smooth, 360° travel. Vacuum versions are available. The PR-50 is compatible with the MMC-200.

KEY FEATURES

- Continuous 360° motion
- Load capacity up to 2 N
- Mutually pre-loaded ball bearings
- Low profile, 34 mm height
- Vacuum versions available

TECHNICAL DATA

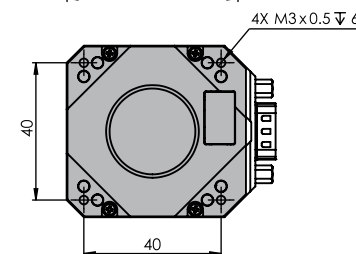
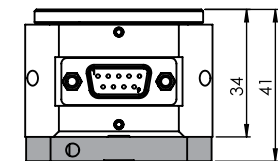
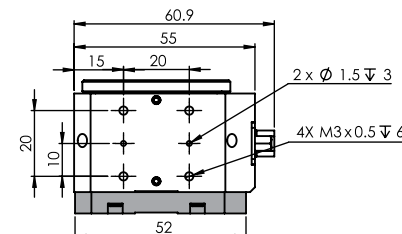
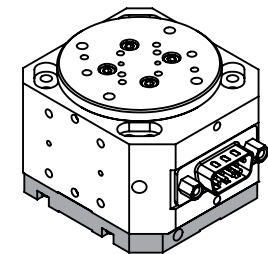
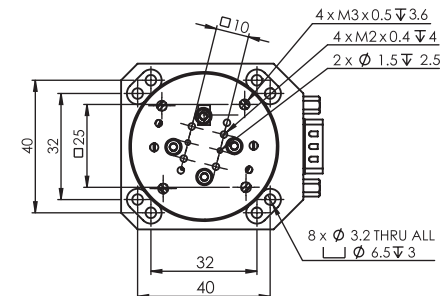
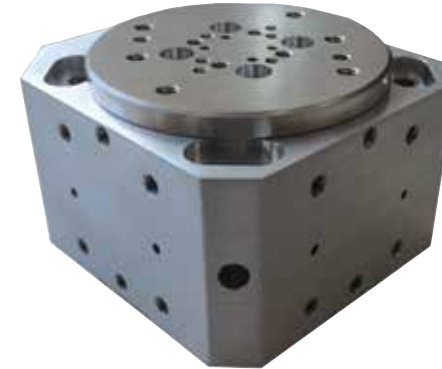
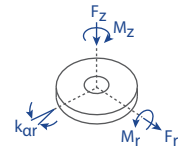
Travel range [°]	360°, limitless		
Flatness (bearings) [μm]	± 3		
Eccentricity (bearings) [μm]	± 3		
Wobble [μrad]	± 50		
Weight [g]	257		
Motor option	Direct Drive Stepper Motor		
Speed, max [°/s]	1800 (5 rev/sec)		
Encoder option	None (open loop)	Analog (1 V _{pp})	Digital (RS-422)
Resolution, typical [m°]	10	5	5
Repeatability, bi-directional [m°]	± 50	± 10	± 10
Repeatability, uni-directional [m°]	50	10	10
Materials	aluminum body, steel bearing (other materials i.e. stainless steel, titanium, etc. available upon request)		

ORDERING INFORMATION

		PR-50-	2	1				
DRIVE	Stepper Motor, SM-006.....	2						
TRAVEL	360°	1						
ENCODER	None	0						
	Analog (1 V _{pp})	2						
	Digital (RS-422)	3						
HOME SWITCH*	None	0						
	Magnetic	1						
ENVIRONMENT	Atmospheric	0						
	High Vacuum, 10 ⁻⁶ mbar	6						

* Only available in open loop

Load, max	F _r [N]	F _z [N]	M _r [N-m]	M _z [N-m]	k _{ar} [μrad/N-m]
SM-006	1	2	5	0.04	150



* all dimensions are in millimeter
*grey parts are for closed loop and home switch version only

Specifications are subject to change without notice.