

Fizeau Interferometer for Surface (Form & MSF) Metrology 10-Megapixel Imaging and 4 Optional Sources

System Overview		S50 HRx	S100 HRx	S150 HRx
Output Diameter		51 mm (2 inch)	102 mm (4 inch)	153 mm (6 inch)
Optical Centerline		108 mm (4.25)	108 mm (4.25 inch)	133 mm (5.24 mm)
Focus Range		±2 meters	±2 meters	±4.5 meters
Interferometer Size (L x W x H)		63 x 29 x 18 cm	70 x 32 x 26 cm	90.2 x 40.8 x 23.9 cm
Weight		25 kg (55 lbs)	33 kg (73 lbs)	50 kg (110 lbs)
Measurement Techniques		Vibration Tolerant PSI & Vibration Insensitive Carrier Fringe		
Alignment System		2-Spot with reticle with 2° Capture Range		
Light Source		Laser, Spectrally Controlled, Laser Diode, and Wavelength Shifting		
Laser Frequency Stability		<0.0001 nm		
Coherence Length		>100 meters		
Output Polarization		Circular (Other options available)		
Camera Resolution		3000 x 3000		
Shutter Speed (shortest)		9 μs		
Camera Digitization		12 bit		
Computer & Software		Top-Performance PC, Windows 10 64-bit OS & REVEAL Software		
Mounting Configurations		Horizontal or Vertical		
Accessories		Optical Accessories and Mount		
Performance				
Image Resolution		35 μm	70 μm	105 μm
Image Distortion			<0.06%	
Fringe Resolution			>600 fr/aperture	
Retrace Error ³ @ 512 fringes			< λ/15 ⁴	
RMS Simple Repeatability ¹			<0.6 nm RMS 1σ – with NO averaging	
RMS Wavefront Repeatability ²			<0.6 nm RMS 1σ – with NO averaging	
Measurable Part Reflectivity		0.1%to 40% direct and >41% with attenuation filter or coatings		
Environment				
Temperature		15°C to 30C		
ΔT/Δt		<1.0°C/15 min		
Humidity		5 to 95% relative, non-condensing		
Vibration Isolation		Isolation System recommended for VTPSI		

¹ RMS Simple Repeatability is defined as 2X the standard deviation of the RMS for 36 sequential measurements (0 averages) of a short plano cavity

² RMS Wavefront Repeatability is defined as the mean RMS difference between a synthetic reference (defined as the average of a 11 36 sequential measurements) and each measurement plus 2X the standard deviation

³ Retrace Error is defined as the PV residual error between a nulled measurement (the reference), subtracted from a measurement with 500 fringes of tilt, and expressed by the first 36 Zernike polynomials

⁴ $\lambda/20$ optionally available

Traceable Measurement to Report <5 seconds

Traceable Metrology

Saved profiles/process trees and report library assure analysis stability user to user, day to day. Data saved with all raw data, masks and filters...you know today and tomorrow how you got your results.

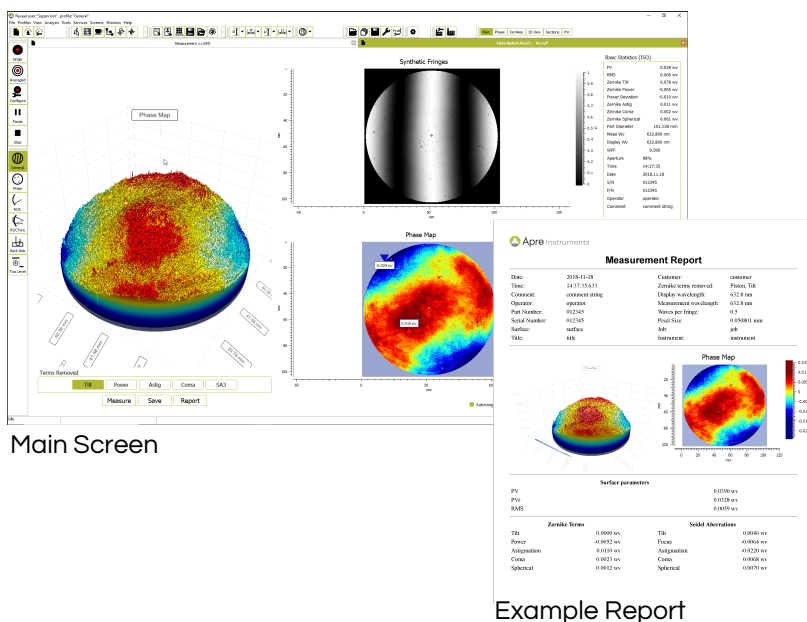
Easy to Learn, Backward Compatible & 64 bit Stable

Internet browser like design is familiar and uncluttered and easy to learn and with .dat file formats you can save new data compatible with you database or analyze old data on REVEAL. With 64 bit Windows 10 operation large data sets are easily handled and your IT department will appreciate the W10 security.

A Complete Metrology Package - selected parameters

APPLICATIONS	FILTERS	ANALYSIS	RESULTS
<ul style="list-style-type: none"> ✓ BASIC <ul style="list-style-type: none"> • Form • Radius of Curvature ✓ Fourier¹ <ul style="list-style-type: none"> • MTF • PSF • PSD ✓ Optical Shop Testing¹ <ul style="list-style-type: none"> • Wedge • Polished Homogeneity • Corner Cube 	<ul style="list-style-type: none"> ✓ Masking ✓ Auto Aperture ✓ Reference Subtract ✓ Box ✓ Erosion (inside/out) ✓ Median ✓ Individual Zernike ✓ Spike ✓ Affine Transforms 	<ul style="list-style-type: none"> ✓ Acquisition Modes <ul style="list-style-type: none"> • Vibration • Tolerant PSI • Wavelength Shifting • Vibration Insensitive ✓ Zernike ✓ 3D View ✓ PVr ✓ Islands ✓ ISO10110-14 ✓ Ogive 	<ul style="list-style-type: none"> ✓ ISO & Seidel ✓ PV, RMS ✓ PVr ✓ Tilt ✓ Power (Zernike) ✓ Power (Deviation) ✓ Astigmatism ✓ Coma ✓ SA3 ✓ 1D Profiles ✓ Lengths

¹Optional Analysis Package



What Users are Saying

"I found the analysis tree to be the most valuable feature of the REVEAL software. It gives the user visibility into the many layers of data processing that occur when making a measurement."

H. Balonek, Optikos

"REVEAL software is intuitive, easy to navigate and very capable in a myriad of applications, but the thing I appreciate most about it is the extensive, exceptionally organized, visually pleasing and effortlessly generated reports."

S. Iles, Edmund Optics

"[REVEAL] has a very user friendly interface and offers multiple ways to view the data. This makes analysis and qualification quick and easy."

A. Godina, Supply Chain Optics"



Apre

Instruments™

Apre Instruments Inc.
2440 West Ruthrauff Road
Tucson, AZ 85705
520.639.8195
sales@apre-inst.com